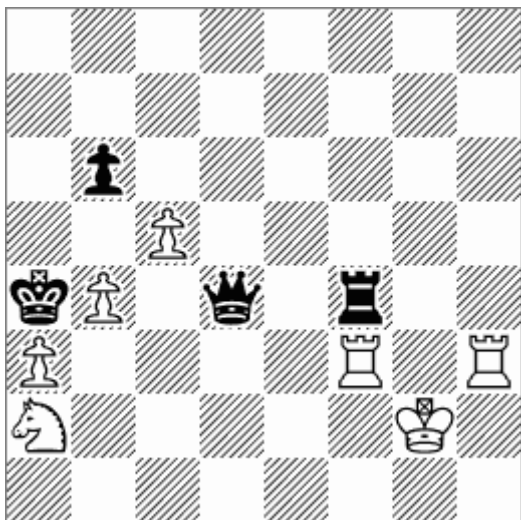


1.



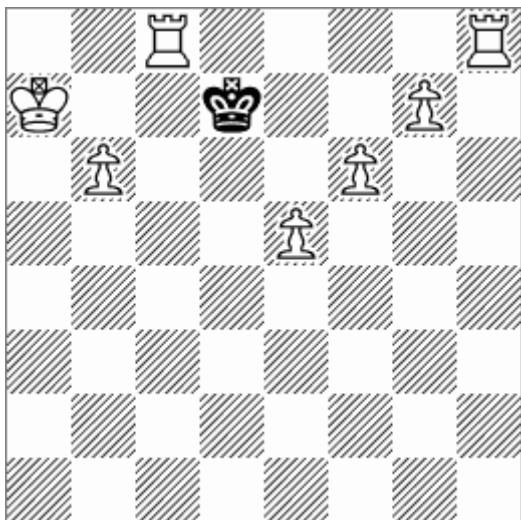
HAYASHI, Masami

The Pawn 1973

Win

<https://twitter.com/propara/status/1582014260242452480>

2.



HASHIMOTO, Miki

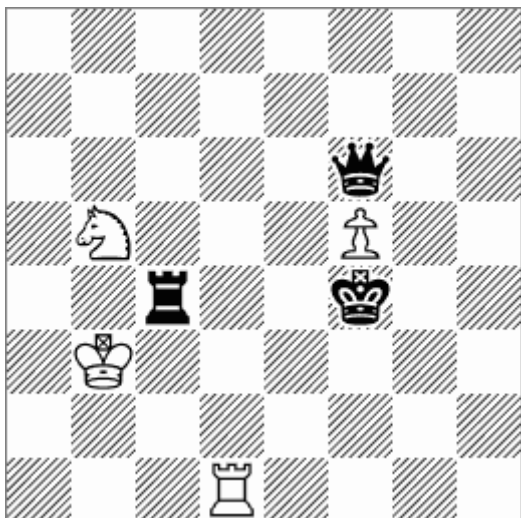
The Pawn 1973

#2

“The tsumeshogi composer HASHIMOTO Miki-san was also a member.”

<https://twitter.com/propara/status/1582014533220335617>

3.



TAKAHASHI, Yoshiyuki

The Pawn, 1974

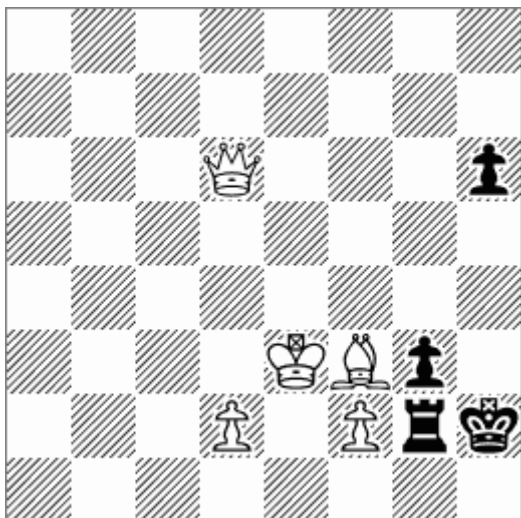
H#2

“I don’t know if it is correct because I have no information, but it may be the first helpmate by a Japanese composer.”

<https://twitter.com/propara/status/1582014886829527041>



5.



WAKASHIMA, Tadashi

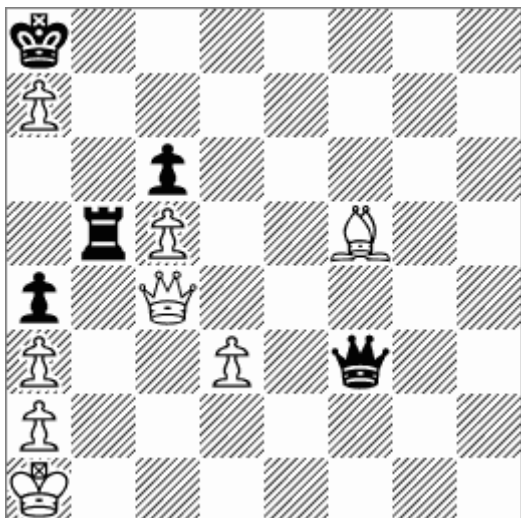
The Pawn, 1974

#3

“My first chess problem.”

<https://twitter.com/propara/status/1582015537642901505>

6.



WAKASHIMA, Tadashi

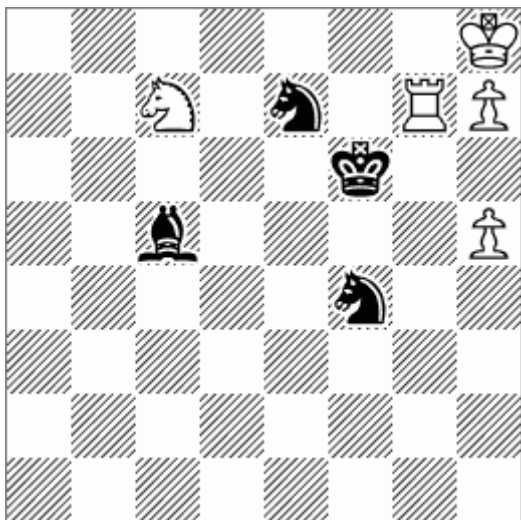
The Pawn, 1974

Win

“I tried composing a study, but I think it is tsumeshogi-like.”

<https://twitter.com/propara/status/1582015834964529152>

7.



WAKASHIMA, Tadashi

The Pawn, 1974

Win

“This study is more chess-like.”

<https://twitter.com/propara/status/1582016130272854018>